

Chislehurst Methodist Church

Refurbishment Scheme: *Building for the future*

Stepping Stones

No 4

www.chislehurstmethodistchurch.org.uk

May 2009

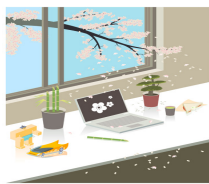


Phone: 020 8467 0084

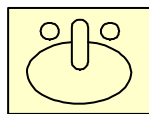
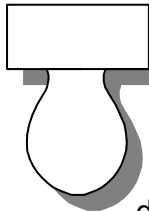
E-mail: barbara.calvert@methodist.org.uk

ACTION!

After all the thought, discussion, prayer and planning the work is beginning. While we wait for the architect to present his final plans for our approval, we are going to start work on those things for which we do not need planning permission, which are most urgent and for which we already have sufficient funds. Over the summer months we will:



1. Replace all the hall windows with double glazed pvc units
2. Transform the ladies and gentlemen's toilets—new toilets, tiling, decoration, false ceilings and flooring.
3. Install a new, modern kitchen with new sinks, dishwasher, new cupboards, flooring etc.—all to meet with the highest standards of the environmental health regulations.



PRAYER!

Loving God, give us the grace to draw closer to you in our endeavor.

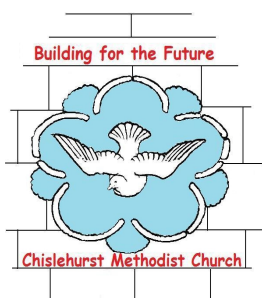
In our contact with others, may we witness to the joy, love and meaning we find in our faith.

In our working together, may we treasure the riches of our shared friendship in you.

Saving God, bless all that we seek to do for you. In the name of

Love, accept our offering of all that we have and do and are.

Amen.



FUNDING!

The Refurbishment Funds : How are we doing?

Funding Appeal.

We launched our Funding Appeal in January. Our target for personal gifts is £140,000. If all donations are Gift Aided this net amount is reduced to £110,000. We have been delighted with the generous response from so many people, not least, former members and friends of the church but there is still some way to go. We are approximately one third of the way towards our Funding Appeal target and to make really strong applications to grant making trusts e.g. District and Connexional Methodist Funds, the National Churches Trust, the Allchurches Trust, we need at this stage to be able to say we are not a third of the way there but HALF way there.

Your help is needed.

If you have not yet made a response but would like to do so - now is the time! If you have been thinking about what is an appropriate response for your particular circumstances, a couple of thoughts:

- ⇒ You can give by Direct debit (Sue Attwood has the forms)
- ⇒ £25.00 each month for 3 years adds up to £900 which with Gift Aid added on would be £1000 +

FUNdraising Sue Cope reports that thanks to Le Café Imperial, all the Talents money eg Sawyer's Sunday lunch, John Sennett's lecture, van Teutem's fair-trade breakfast...the FUNdraising total has passed the £2000 mark. That's great and we are looking forward to further 'Talents' events in the coming months. So.....

Our total Refurbishment Fund to date is **£237,000**.
Our target is **£500,000**



Resourcing Renewal: towards a mission shaped

The first three sessions were on images of the church, the church as an expression of the incarnation and the church at worship. These sessions were largely about the church. The final session moves us from what we believe and how we worship to The Church in Society Today. This tends to be a bit contentious because it affects our life-style and social/political action.

For example, we are a fair trade church. This is a very simple outworking of what we believe about God's commitment to justice for all people and God's particular care for the most vulnerable in the world. It is easy for us to mouth these things, but becoming a fair trade church means not only that we use only fair trade products within the life of the church, but also that we carry this practice into our homes as well, seeking out wherever possible goods that have been fairly traded. Where there is a choice, it is a choice between supporting justice or supporting injustice. On one level, very simple; on another level, quite testing of our decision to follow Christ's way.

Another example: we went to an ecumenical service at Westminster Methodist Central Hall as part of the Strangers into Citizens campaign, celebrating the diversity of our society and urging government to allow long term migrants who are in this country without legal papers to become committed citizens, contributing more openly to our society. This might sound wrong to some or just too political to others - though leading figures in every major party support this move - but it does begin to test the willingness of Christians to work out the practical implications of the most elementary things that we believe: God is the God of all people, without discrimination, loving each and deeply committed to establishing the kingdom here on earth.

In our meeting, at 8.00pm Monday 29th June we shall be trying to work out together what role the Christian Church has in forming a society which represents God's dream and therefore is for the common good of all.

Why not come along and contribute? David Calvert

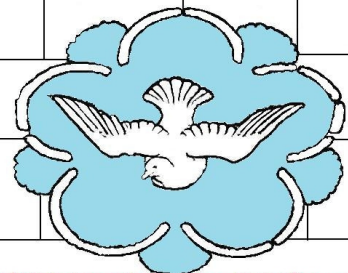
new logo!

If you stand in the pulpit, turn to your left and look up you will see this beautiful stained glass window.



The window provided the inspiration for our new logo designed by Jacqui Hicks.

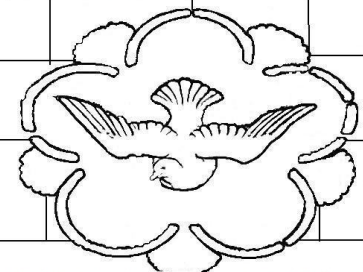
Building for the Future



Chislehurst Methodist Church

In blue or black and white.

Building for the Future



Chislehurst Methodist Church

Many thanks Jacqui. Look out for the new logo!